



BOTSWANA & ZIMBABWE | 14 NIGHTS

Delta Splendour 2



\$50 200 pps

All tours based on party of 10 | Prices per person sharing
Single supplement will apply | Prices subject to exchange rate & availability.

Breathtaking views.

Embark on a 14-night adventure through Botswana and Vic Falls, starting at Jack's Camp in the Makgadikgadi Salt Pans, an oasis in the Kalahari Desert. Experience the diverse Okavango Delta at Wilderness Jao, offering wildlife activities amidst riverine forests and floodplains. Move to Wilderness Mombo in the central Okavango Delta, home to exclusive rhino populations and luxurious suites raised for panoramic views. Explore Wilderness DumaTau in the Linyanti Concession, known for diverse wildlife sightings and spacious guest suites overlooking Osprey Lagoon.

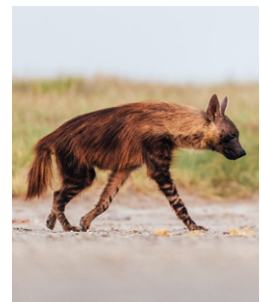
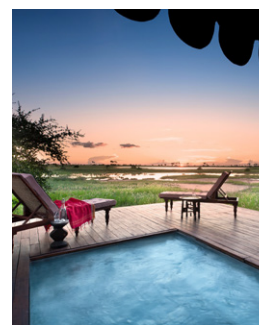
Conclude your journey at the iconic Victoria Falls Hotel, a historic establishment offering access to UNESCO-listed Victoria Falls, known as 'The Smoke that Thunders'. Enjoy world-class service, culinary delights, and breathtaking views at this grand hotel.



Itinerary

Jacks Camp, Makgadigadi Salt Pans - 3 Nights

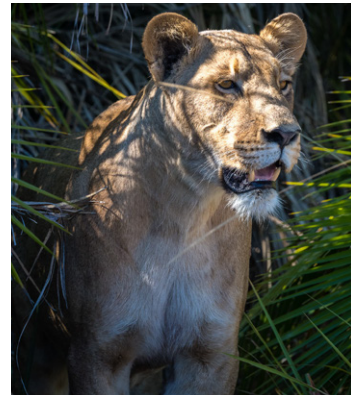
Set in the heart of the dry savanna of northeastern Botswana, the Makgadikgadi Pan is the world's largest network of salt pans stretching over 3900 square kilometres. In the dry season, this vast expanse of sun-baked salt glistens in the light, and when the rains come, the pan is home to a cornucopia of flamingos and other waterbirds, as well as one of Africa's largest zebra populations, whose annual migration is a wonder to behold. And all while being looked after by attentive staff in total luxury. Jack's Camp is an oasis of style and comfort in the heart of Botswana's Kalahari Desert. As a 1940s-style tented safari camp, it promises a truly authentic safari experience.



Wilderness Jao, Okavango Delta - 3 Nights

The Okavango Delta is a World Heritage Site as it is the largest inland delta in the world. The Okavango Delta stretches over an impressive 15000 square kilometres. Visitors can enjoy a number of wonderful activities such as game viewing, fishing, bird watching or taking an authentic guided Mokoro excursion through this wetland paradise in a traditional dugout canoe.

In the heart of the Okavango, luxurious Wilderness Jao is set amongst islands fringed with riverine forests and vast floodplains with prolific wildlife. Customised luxury guest suites share Jao Island with the spectacular main area, which features a pool, a library and an outdoor boma for evenings of traditional food, song and dance. The views of the night skies over Wilderness Jao cement its place in the safari firmament as a star among equals.



Wilderness Mombo, Mombo Concession - 3 Nights

Mombo Concession, “the Place of Plenty”, is situated within the central Okavango Delta. The terrain encompasses a rich tapestry of landscapes, including mopane woodlands, Kalahari sand belts, acacia thickets, and seasonal floodplains adorned with wild date palm islands and riverine forests.

The region is teeming with game, and it’s the exclusive home of the Okavango Delta’s sole population of white and black rhinos. Wilderness Mombo, on Mombo Island, is built under large shady trees and overlooks a wonderful floodplain teeming with wildlife.

The spacious suites are raised off the ground to maximise the vistas over the plains. Each tent is elegantly furnished, complete with en-suite bathroom, a dressing area, indoor and outdoor showers; as well as a bathtub that creates a sense of indulgence. The expanded deck includes a sala and plunge pool.

Wilderness DumaTau, Linyanti Concession - 3 Nights

The Kwando-Linyanti river systems are known for their exotic animal species and luxury safari options. The area hosts large herds of impala, blue wildebeest, giraffe and buffalo as well as the world's highest density of elephant. Several packs of wild dog are found in the area and lion, leopard and cheetah are frequently sighted. Night drives allow for the discovery of nocturnal creatures such as civets, genets, honey badgers and spring hares. Wilderness DumaTau's extensive lagoon frontage ensures that each guest suite has uninterrupted views over Osprey Lagoon, and the movements of the mega-herds of elephants the Linyanti is so famous for.



Victoria Falls Hotel, Victoria Falls - 2 Nights

Victoria Falls is a spectacular sight of awe-inspiring beauty and grandeur on the Zambezi River. It forms the border between Zambia and Zimbabwe and stretches across almost two kilometres into a gorge over one hundred metres below – making it one of the world's widest waterfalls. Dubbed 'The Smoke that Thunders' by locals, this is a UNESCO World Heritage Site. Step back in time at The Victoria Falls Hotel – “the grand old lady of the Falls”. The hotel is perfectly situated to offer easy access to the 'smoke that thunders' and the surrounding National Park, with a private path leading directly to the entrance. World-class service, culinary delights and incredible views make it a magnet for international visitors and locals alike. You can dine and dance in the Livingstone Room, savour the famous breakfast and buffet and ethnic entertainment at the Jungle Junction and sip cocktails on Stanley's Terrace – a rendezvous for adventurers for over a century.



Rich Field
+27 73 566 6033
rich@wildlyafrica.co.za

Luke Beckmann
+27 72 238 5683
luke@wildlyafrica.co.za

wildlyafrica.co.za