



NAMIBIA | 20 NIGHTS

Desert Nights



\$24 100 pps

All tours based on party of 10 | Prices per person sharing
Single supplement will apply | Prices subject to exchange rate & availability.

Mind blowing **memories.**

If you are looking for the best, most mind blowing, once in a lifetime way to create your Namibian memories, while experiencing the last word in exclusive luxury and service, then look no further. We collect you and fly you via private charter to each destination – taking in the sights from the air along the way.

We stay at the most exclusive luxury lodges and camps on offer. We will wine and dine you with world class cuisine, in the most breathtaking settings. And more than that we will take you up close and personal with the culture, the wilderness, and the wildlife of this magnificent country.



Itinerary

The Weinberg, Windhoek - 1 Night

Situated in Klein Windhoek on the Am Weinberg Estate, the Am Weinberg Boutique Hotel is an elegant 43-bedroom hotel wraps around a heritage building, creating an inviting courtyard. Am Weinberg Boutique Hotel has various dining options.

The Sky Bar Lounge is situated on the roof while the Library Wine Bar and Lounge is ideal for light meals. An all-day dining restaurant completes the food and drink offering.

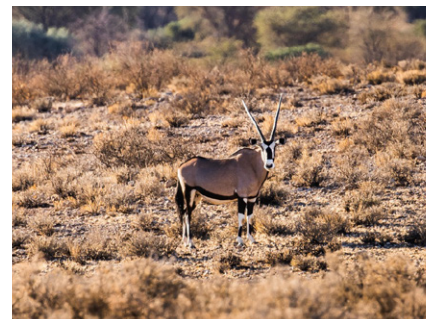


Kalahari Anib Lodge, Kalahari Namibia - 1 Night

Kalahari Anib Lodge is an oasis of hospitality in the midst of the red Kalahari dunes. Experience the magic of the Kalahari on a hiking tour or on a nature drive around the park, before returning to enjoy the lodge's shaded courtyard and large swimming pool. We have 36 rooms with private verandas which are available for tour groups; individual travellers will be placed in our 19 rooms set slightly apart, with views of the open savannah and a separate swimming pool.

If you prefer to camp, we have three exclusive sites equipped with private bathrooms and barbecue facilities. Located around 30km north-east of Mariental, our lodge makes for a perfect stopover if you're heading south.

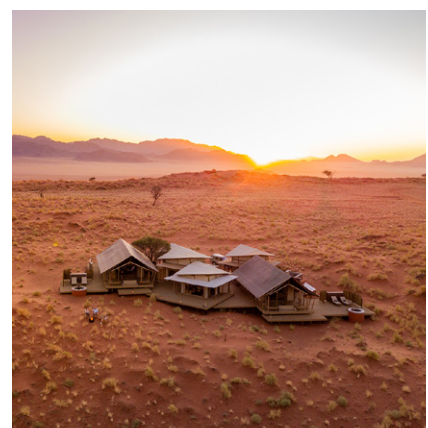
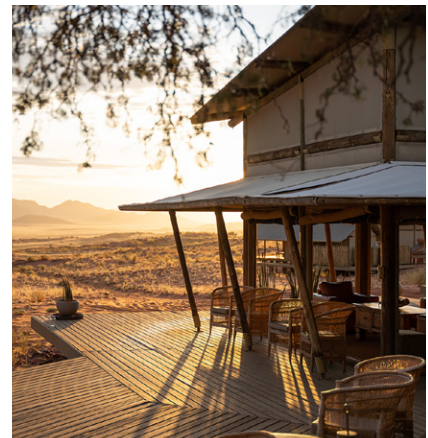
INSIDER'S TIP: Springbok, gemsbok and ostrich as well as jackal and porcupine inhabit the dunes and dune valleys (known as 'streets').



Wolwedans Dune Camp, NamibRand Nature Reserve - 2 Nights

Nestled within dunes of the Namibrand Nature Reserve, Wolwedans Dune Camp is set against a backdrop of extraordinary natural beauty. Sleeping up to twelve guests, the en-suite tents are pitched on wooden platforms. Private verandas allow for safe sleep-outs under the clear African skies. The lapa is comprised of a lounge, dining area and an open-plan kitchen which allows guests to chat to the chef while he prepares a scrumptious dinner. Our sundowner deck with its fireplace is the central meeting point of the camp.

INSIDER'S TIP: You can adopt a fairy circle, the mysterious natural phenomena of the desert. All funds raised go directly to the NamibRand Conservation Foundation.



Wilderness Little Kulala, Sossusvlei - 2 Nights

Sossusvlei is where you will find the iconic red sand dunes of the Namib. The clear blue skies contrast with the giant red dunes to make this one of the most scenic natural wonders of Africa and a photographer's heaven.

Wilderness Little Kulala offers luxury desert suites, each have a private plunge pool, private rooftop area for sundowners, "African tapas" and other rooftop dinners or stargazing, a signature sleep-out experience on the bottom deck of each accommodation to allow for easy access during the night, luxury fittings, as well as indoor and outdoor showers.



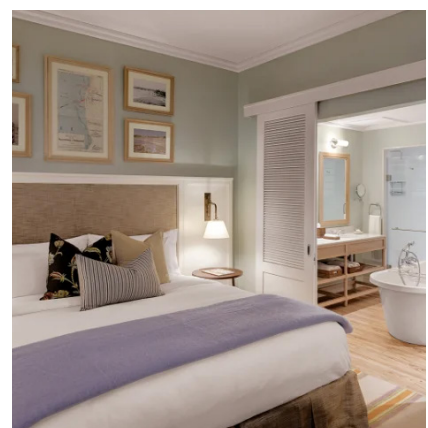
Strand Hotel Swakopmund, Swakopmund - 2 Nights

With its extensive, unique and creatively entertaining Restaurants, Bars, Deli, Lobby-Lounge, Sea Facing Terraces, Beach Kiosk and state of the art Conference & Banqueting Center, all set on the Mole, a historic and iconic site surrounded by Ocean on three sides, the Strand Hotel Swakopmund is a social epicenter and destination in itself for all visitors to and residents of Swakopmund.



Its architectural inspiration finds its roots deep in Namibian-German history and reflects this in a tasteful contemporary manner. The interiors are residential in nature, and the brief to all designers involved was to create a non-hotel, hotel. One as charming and welcoming as the town it is located in. Simply very warm and comfortable, and as they say in German: "gemütlich" providing a genuine "sense-of-place" atmosphere adding to any Namibian visit.

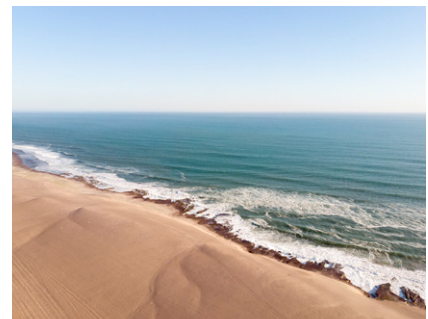
INSIDER'S TIP: The Strand Hotel is the perfect venue for travellers wanting to explore Swakopmund.



Shipwreck Lodge, Skeleton Coast - 2 Nights

Shipwreck Lodge is located in the famous Skeleton Coast Central Concession between the Hoarusib and Hoanib rivers in Skeleton Coast National Park, only 45 km from Möwe Bay. The lodge is situated on the Southern bank of the Hoarusib River mouth, nestled between the dunes with views over the Atlantic Ocean. Accommodation consists of en-suite rooms, each with a writing desk, bedside lamp and a small deck in front of the unit. A small coffee and tea station with a hot-water flask (refillable at reception) is included for guests' convenience. From the comfort of the restaurant deck guests appreciate the stark desert, the solitary landscapes and the survival skills of animals in these harshest of conditions.

INSIDER'S TIP: Shipwreck Lodge is situated on a 146,000-hectare (360,000-acre) concession in the north-western Namibia.



Wilderness Damaraland Camp, Twyfelfontein - 2 Nights

The Huab River Valley lies in one of the best wilderness areas in Namibia, offering endless vistas of plains, valleys and mountains. Wilderness Damaraland Camp is run in partnership with the Torra Conservancy and visits to the local farmstead reveal the fruits of this very positive relationship. Each of the ten spacious en-suite, adobe-style thatched accommodations (including a family unit) has a large private viewing deck. New technology and ancient knowledge makes for an ultra-light footprint; nature drives and guided walks offer sights of desert-adapted wildlife, ancient rock-art and striking geological formations. Astonishing night skies round out each day's experiences.

INSIDER'S TIP: Meet members of the local village on a community visit and discover the inspiring story of how Wilderness Damaraland Camp came to be..



Wilderness Desert Rhino Camp, Palmwag - 2 Nights

Wilderness Desert Rhino Camp offers an original, exclusive wilderness experience and the possibility of seeing some of the largest free-ranging population of desert-adapted black rhino in Africa. The desert plains – transformed overnight by summer rains – are starkly scenic, and home to other unique species, from Hartmann's zebra and giraffe, to the bizarre welwitschia plant. The camp consists of eight comfortable Meru-style tents with en-suite bathrooms, and shady main area with refreshing plunge pool. Run in conjunction with Save the Rhino Trust (SRT), Wilderness Desert Rhino Camp offers rhino tracking by vehicle and on foot with experts from this conservation NGO.



Anderssons At Ongava, Ongava Private Game Reserve - 2 Nights

Guests at Anderssons at Ongava have the option of being immersed in and can contribute to developing creative, knowledge driven solutions with resident scientists, visiting researchers, conservationists and rhino security personnel, or simply relaxing and enjoying the luxurious guest suites, waterhole, viewing hide, and pool where they will find their own personal place for reflection. Ensuring a light footprint and an exceptional experience, Anderssons at Ongava will have seven contemporary designed luxury guest units and one family unit, accommodating a maximum of 18 Guests.



Onguma Camp Kala, Onguma Nature Reserve – 2 Nights

On the eastern boundary of Etosha National Park in Namibia is Onguma Nature Reserve, a private wilderness spanning 34,000 ha. Within this reserve, elevated on wooden decks and with panoramic views over one of Onguma's most beautiful and active waterholes is the exclusive and intimate Onguma Camp Kala. Appealing to the sophisticated luxury adventure traveller seeking authenticity and deep comfort, the camp accommodates just eight guests in 4 suites. Spacious and private, the open-plan suites have a sumptuous bedroom and comfortable lounge with a state-of-the-art air-cooling system, and a beautiful bathroom with bespoke double vanities, full-size free-standing bathtub and generous shower. Each suite has its own deck with plunge pool, wood-fired hot tub and along a short walkway, a private, shaded Sala with an outdoor daybed – perfectly placed for an armchair safari – or even a "sleep out" under the stars. In the central guest area, there is a comfortable lounge, cocktail bar and an expansive deck. The dining area has an open plan, interactive 'show' kitchen and all-day pantry for tasty treats. A highlight at Camp Kala is undoubtedly the ground-level photographic hide which offers a different perspective of all the waterhole action. There is also a gym, spa and yoga deck.



Okonjima Luxury Bush Camp, Okonjima Nature Reserve – 1 Night

The malaria-free Okonjima Nature Reserve is home to The AfriCat Foundation, dedicated to rescuing injured carnivores. AfriCat have rehabilitated and released over 1 000 of their 'patients' back into the wild. Observe the rehabilitation work, track rehabilitated animals and see big cats and other animals in the wild. What's more, Okonjima Bush Camp offers you this unique experience in luxury and style. Eight exclusive African chalets and a junior suite are situated at the edge of this wilderness area. Discrete from one another, each chalet has 180°-degree views of the bushveld which can even be enjoyed from your bed!

INSIDER'S TIP: Home to the world's largest cheetah population, Namibia's cheetah and leopard are mostly found on commercial farms.

The Olive Exclusive Hotel, Windhoek – 1 Night

The Olive Exclusive has sleek, modern lines complemented by organic textures, natural furnishings and an eco-friendly philosophy. Organic elements combine to create simple elegance, offset by Namibian landscape photographs. The seven suites are individually decorated so that each reflects a different region of Namibia, and each has its own lounge area with fireplace and private dining room.

Wide glass doors open onto spacious decks where you can relax on your shady daybed, enjoy al fresco lunches or (in our premium suites) take a dip in your own private plunge pool. Air-conditioning, satellite TV and iPod docking stations come as standard, as do Wi-Fi access and a fully stocked mini bar.



Rich Field
+27 73 566 6033
rich@wildyafrica.co.za

Luke Beckmann
+27 72 238 5683
luke@wildyafrica.co.za

wildyafrica.co.za